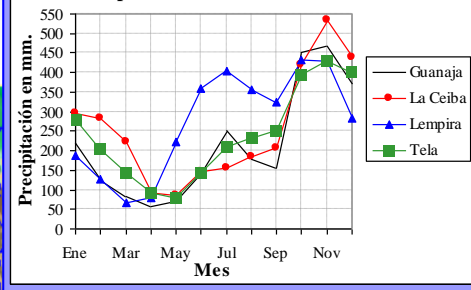


CAMBIO CLIMATICO EN HONDURAS

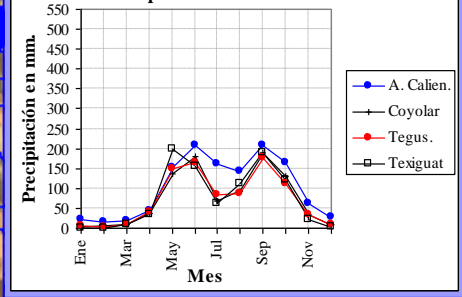
ESCANARIOS WRF



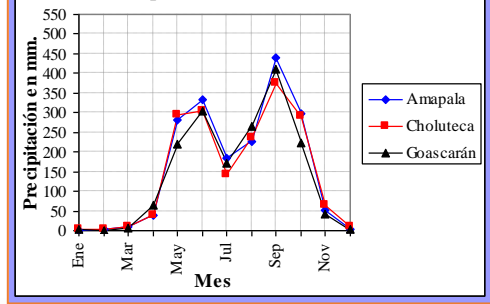
Precipitación en la Costa del Mar Caribe



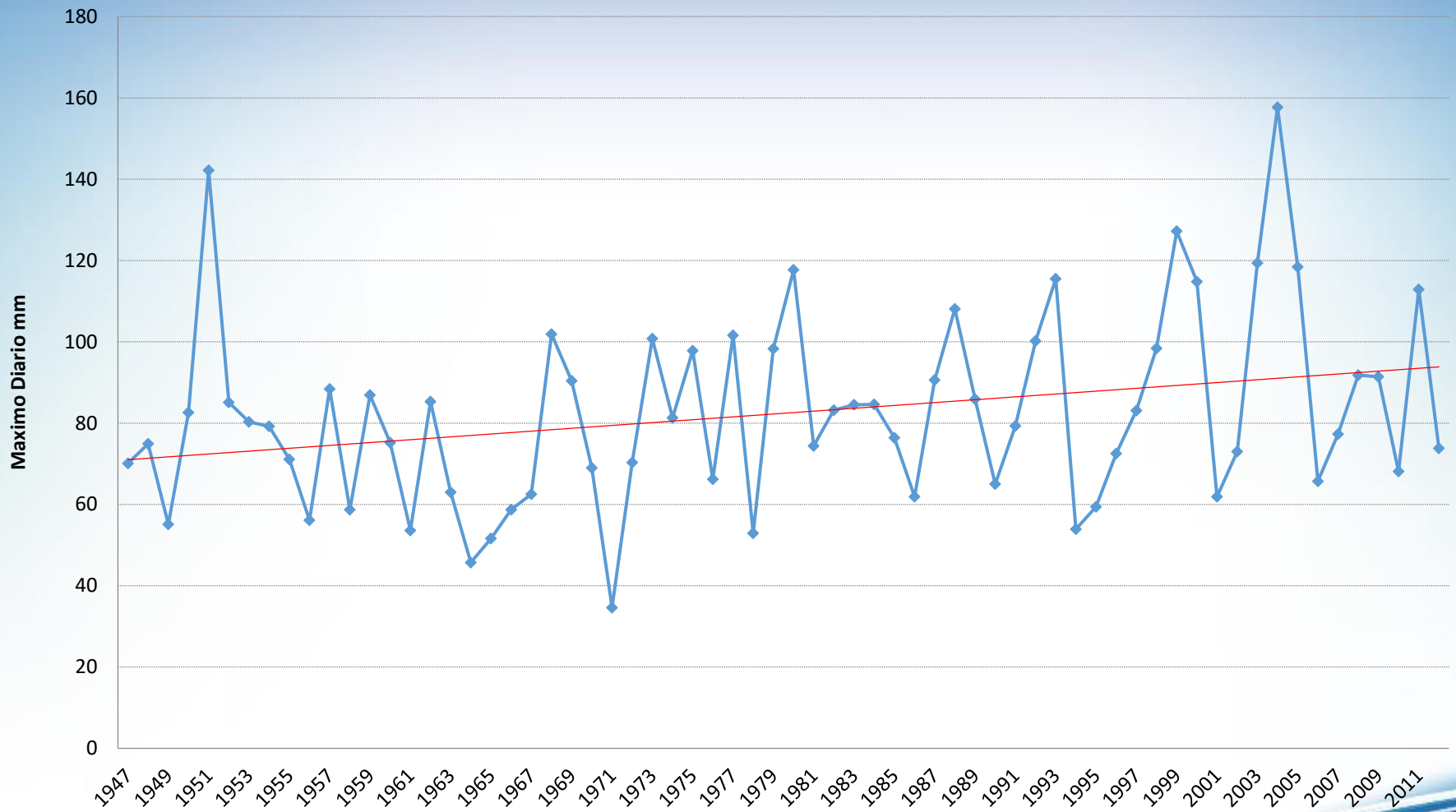
Precipitación en la Zona Central



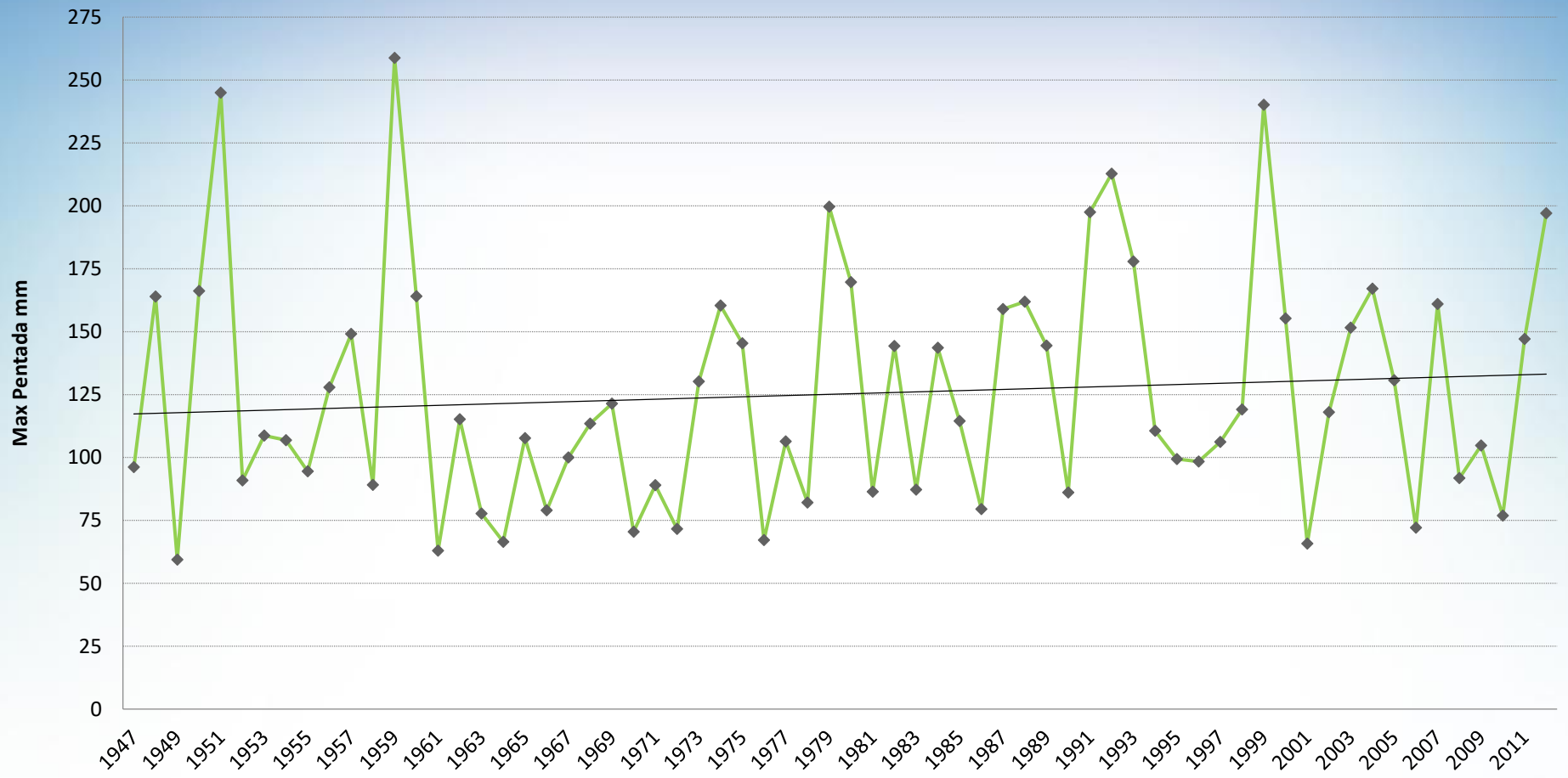
Precipitación en el Litoral Pacífico



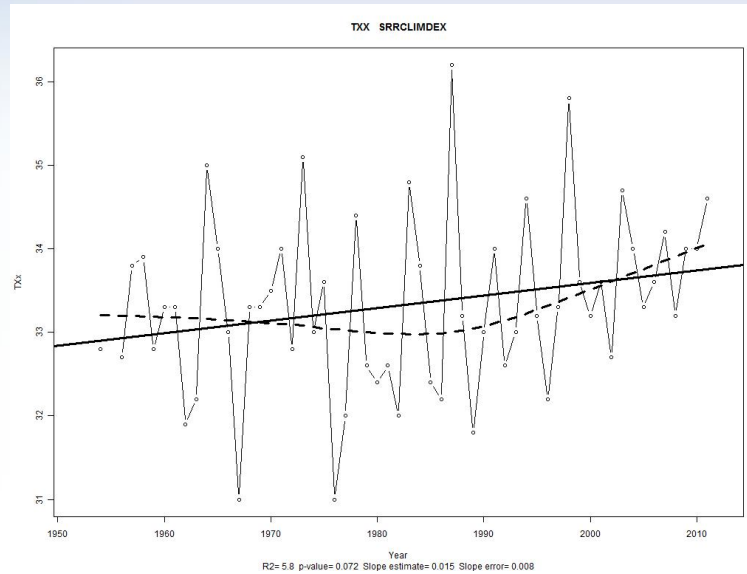
lluvia máxima diairia de Santa Rosa de Copan



Lluvia máxima pentadal de Santa Rosa de Copán

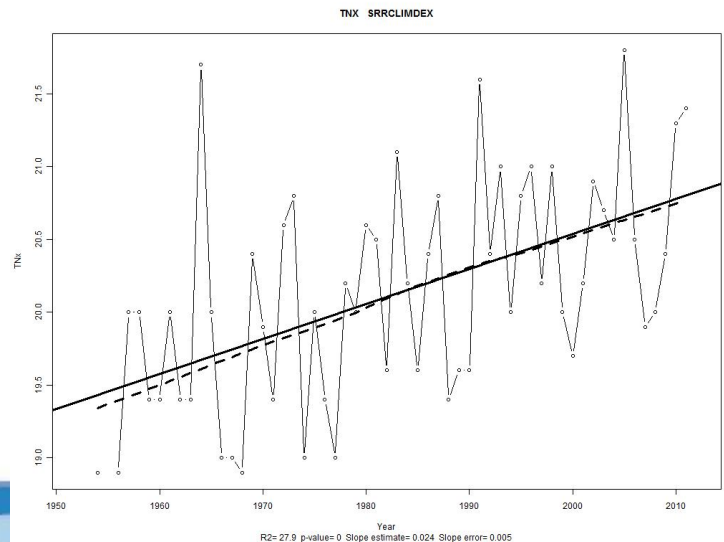


Tendencias Climáticas de Santa Rosa de Copan

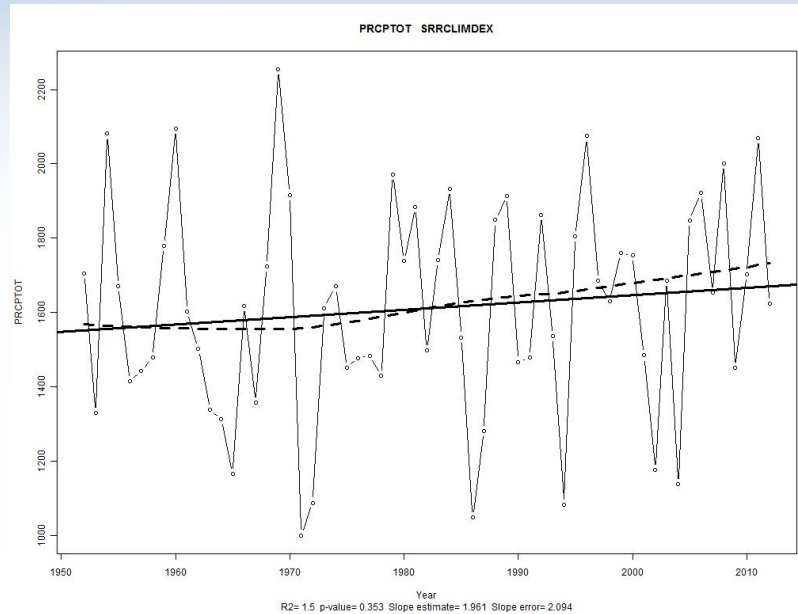


Tendencia de la Temperatura de las tardes

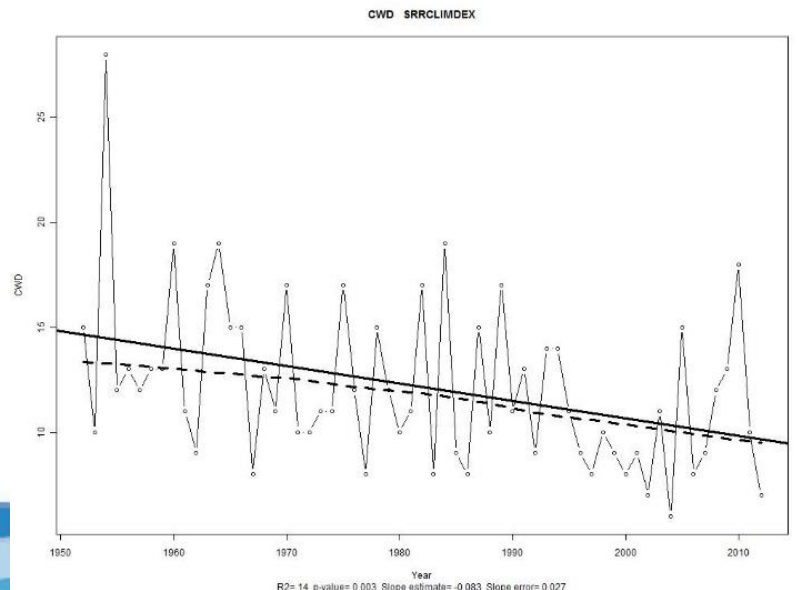
Tendencia de temperaturas matutinas



Tendencias Climáticas de Santa Rosa de Copan

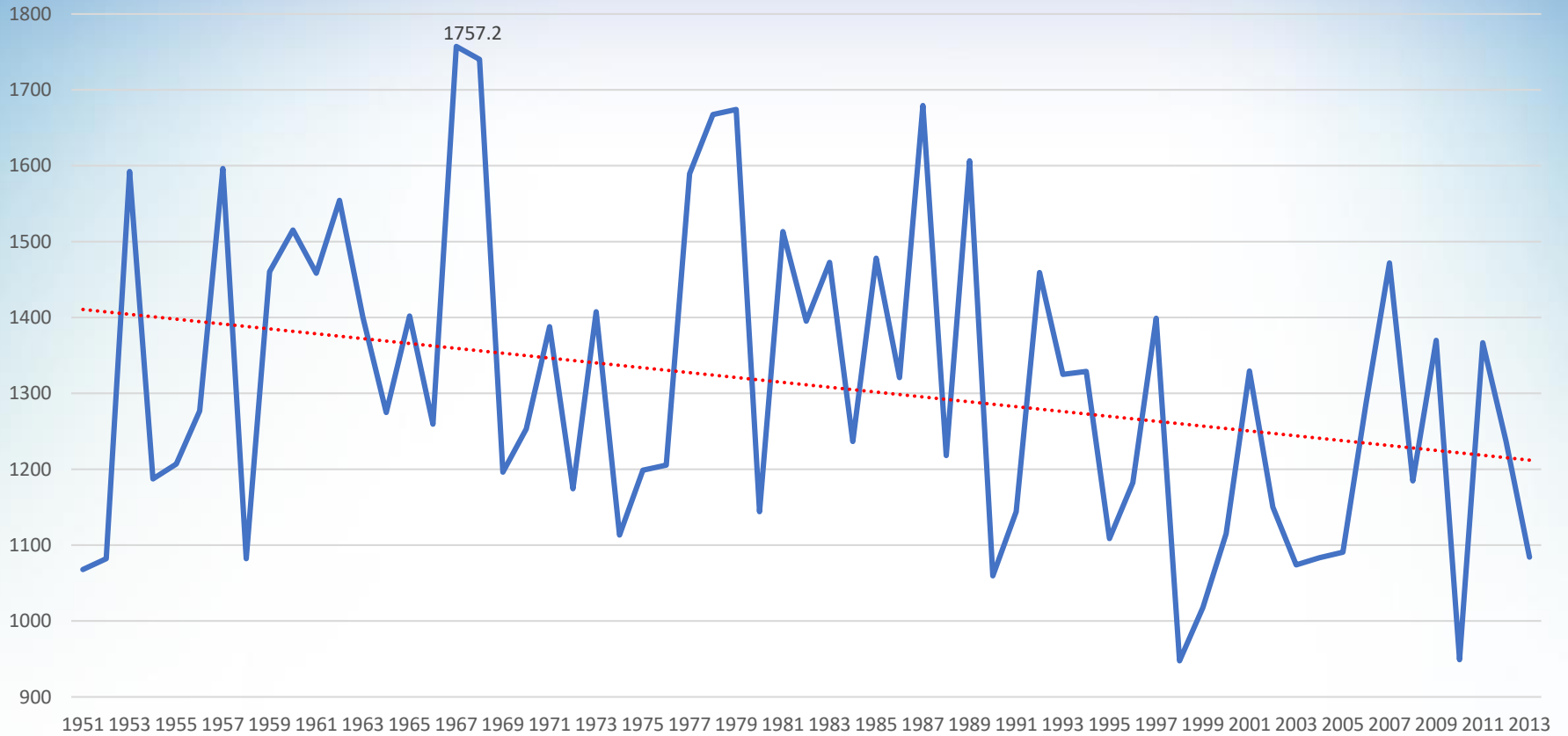


Tendencia de la Precipitación anual

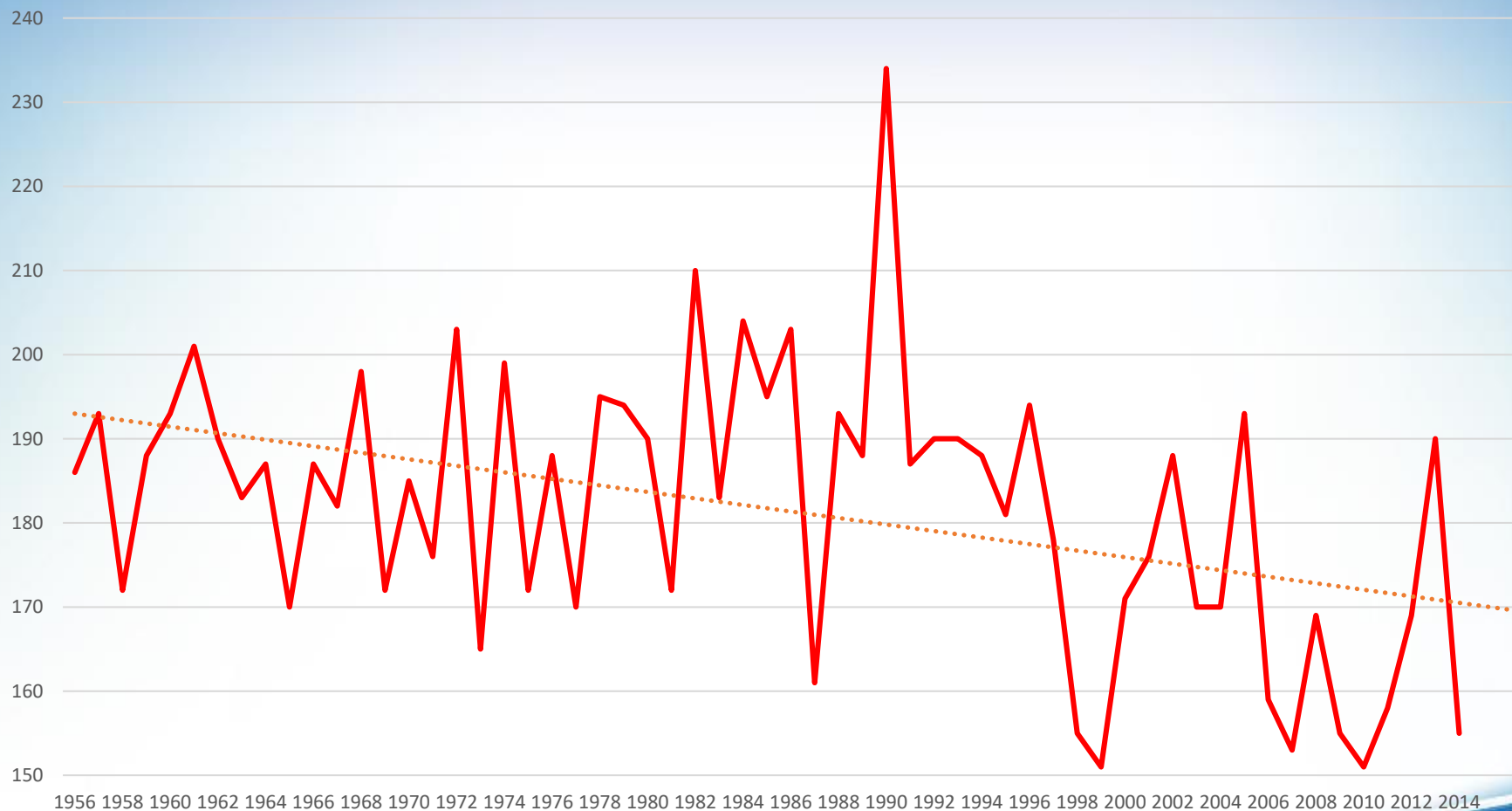


Tendencia de número de días con lluvia

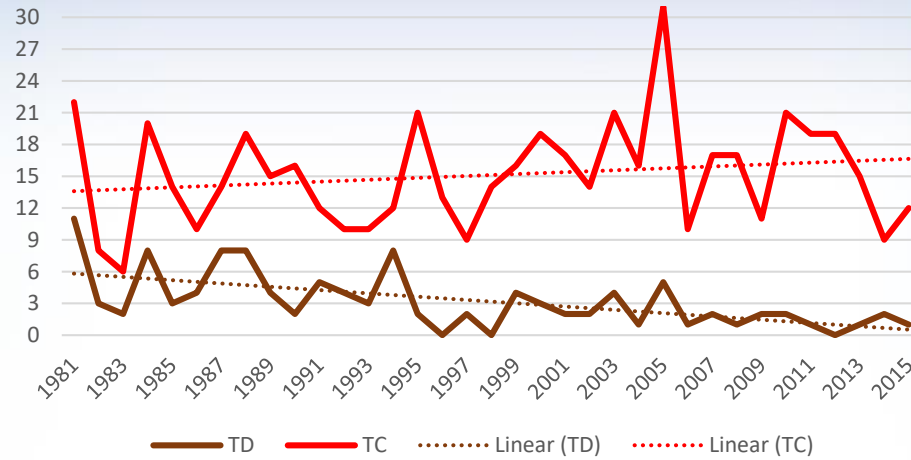
Precipitación total anual de Catacamas



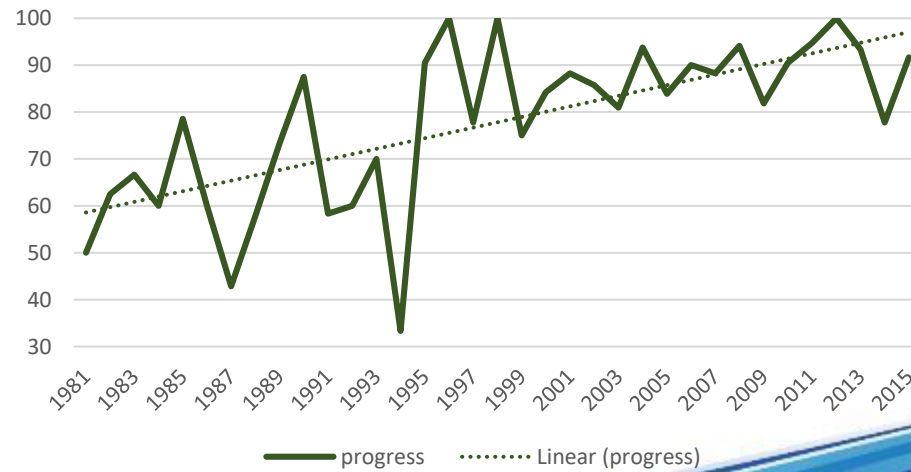
Total días con lluvia por año en Catacamas



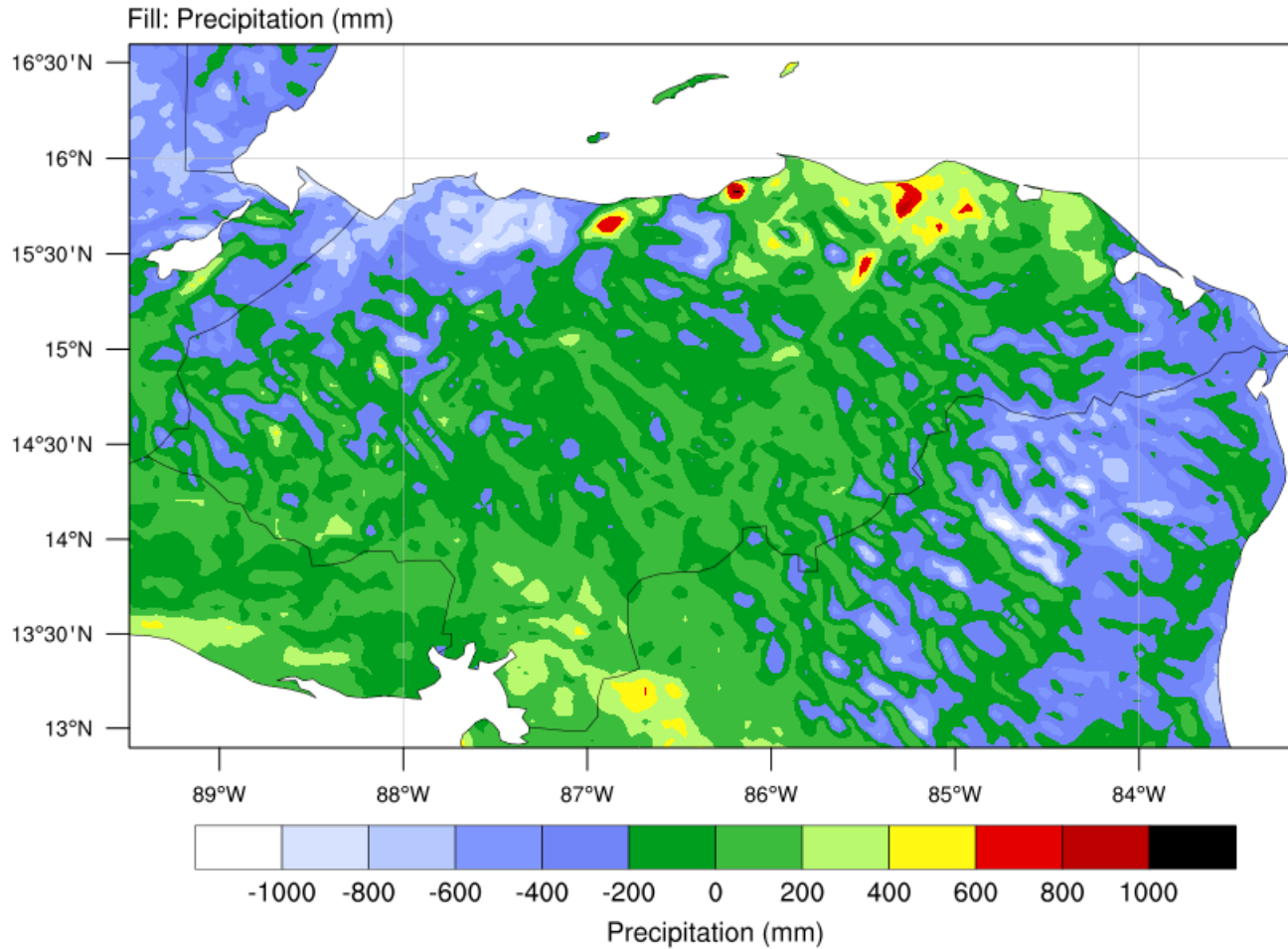
Total TD whitout reaching TS stage



Intensifying of TD

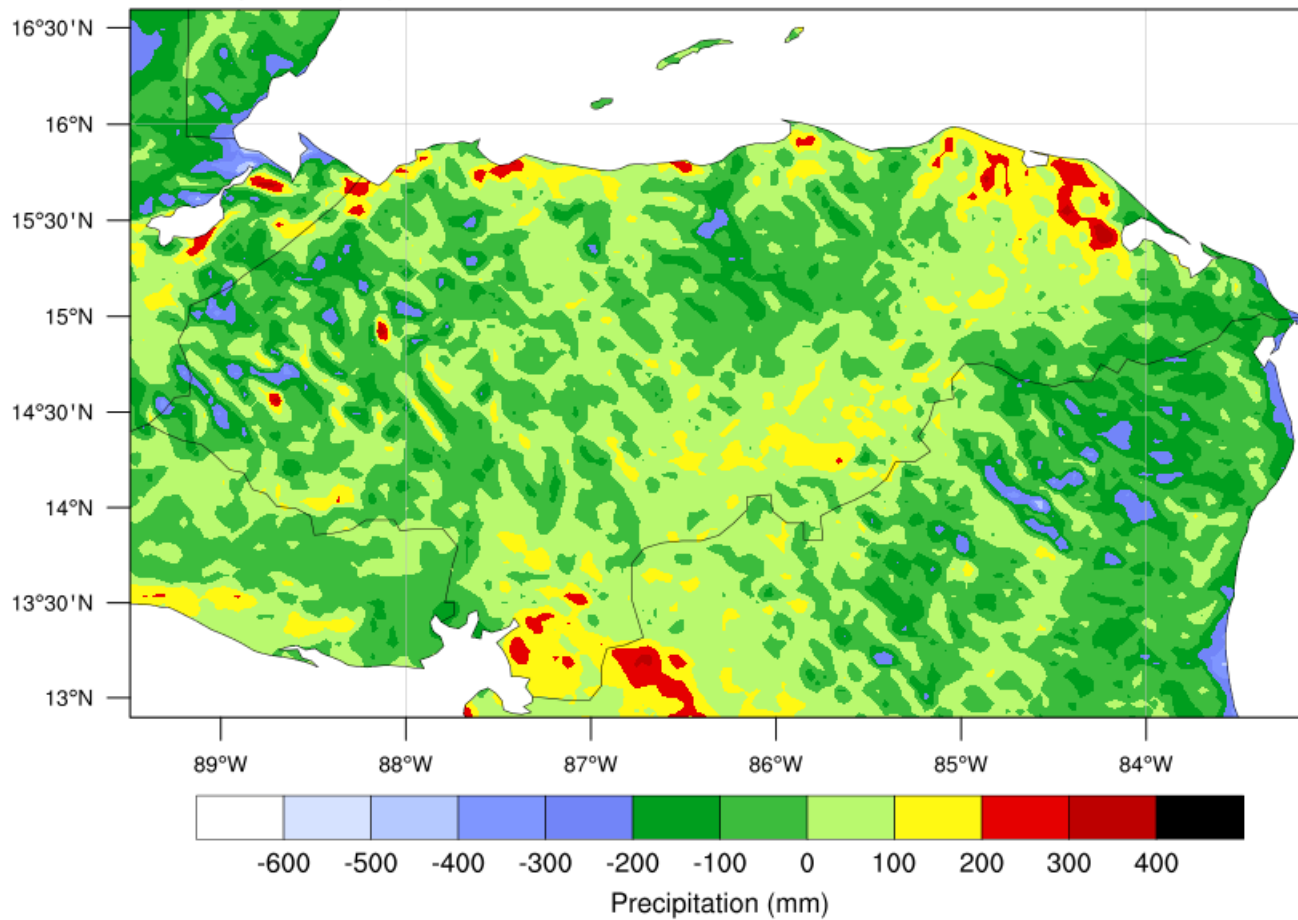


Annual Difference 2050s-2000s

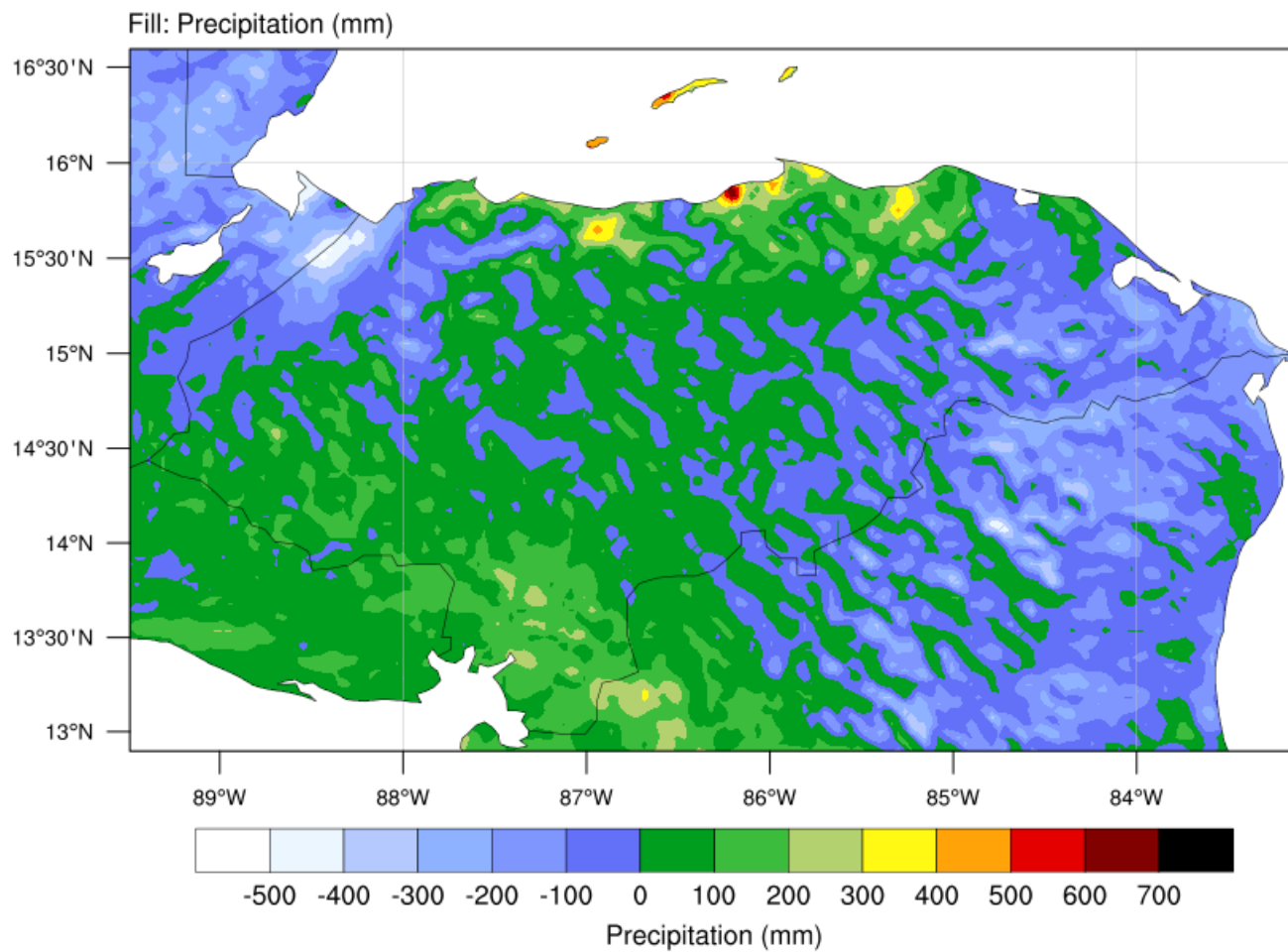


JunJulAug Difference 2050s-2000s

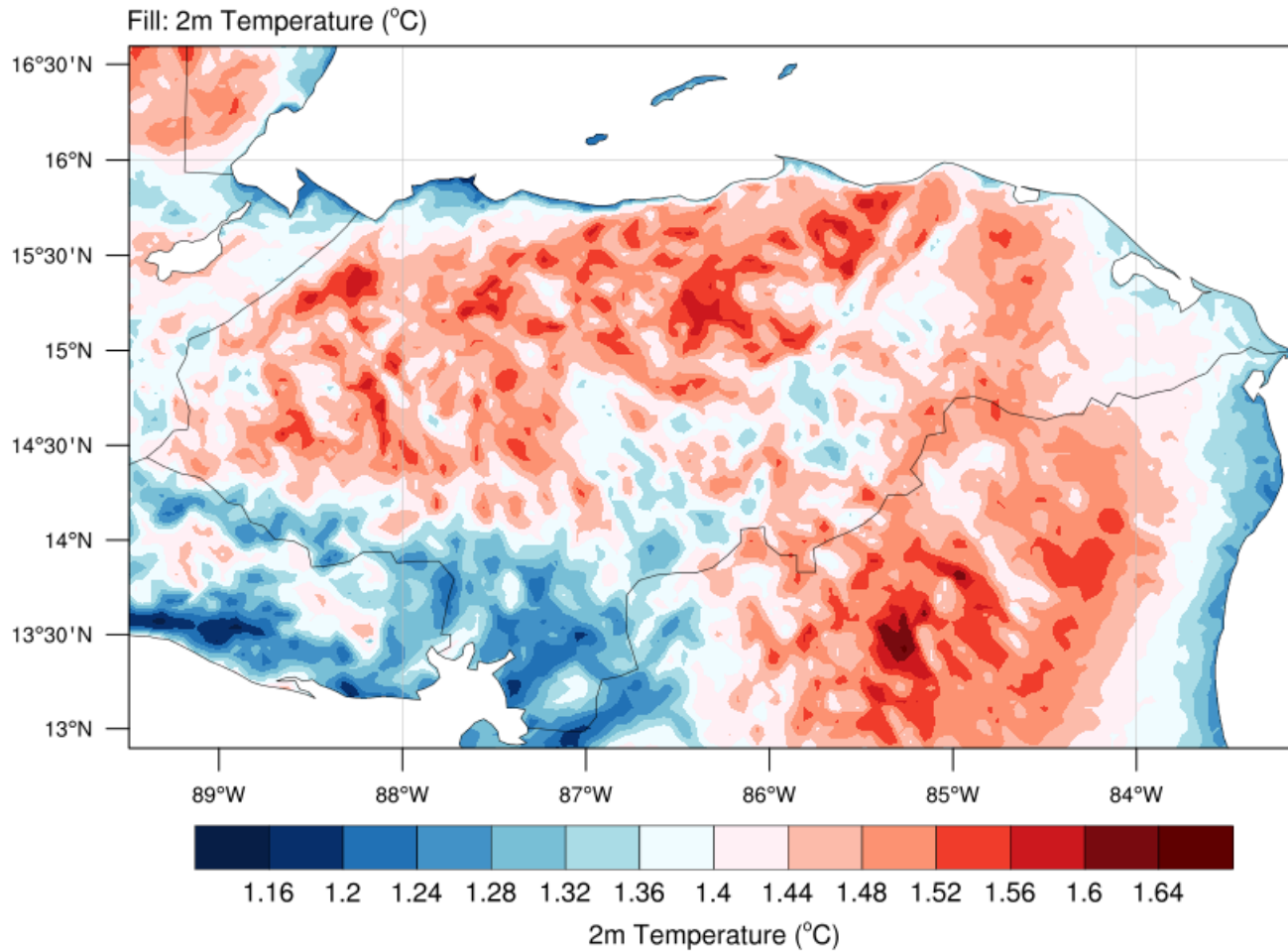
Fill: Precipitation (mm)



SepOctNov Difference 2050s-2000s

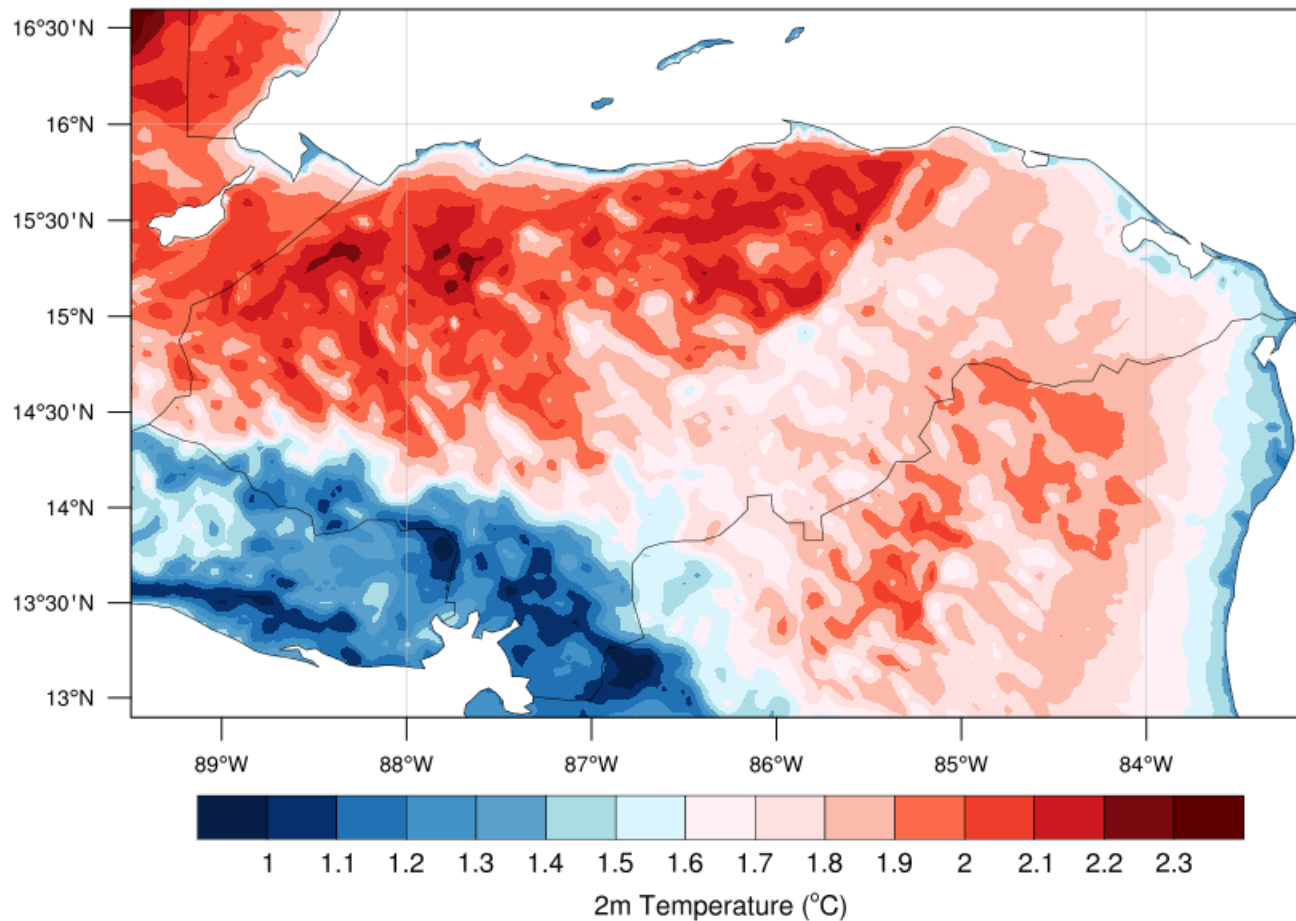


Annual Difference 2050s-2000s



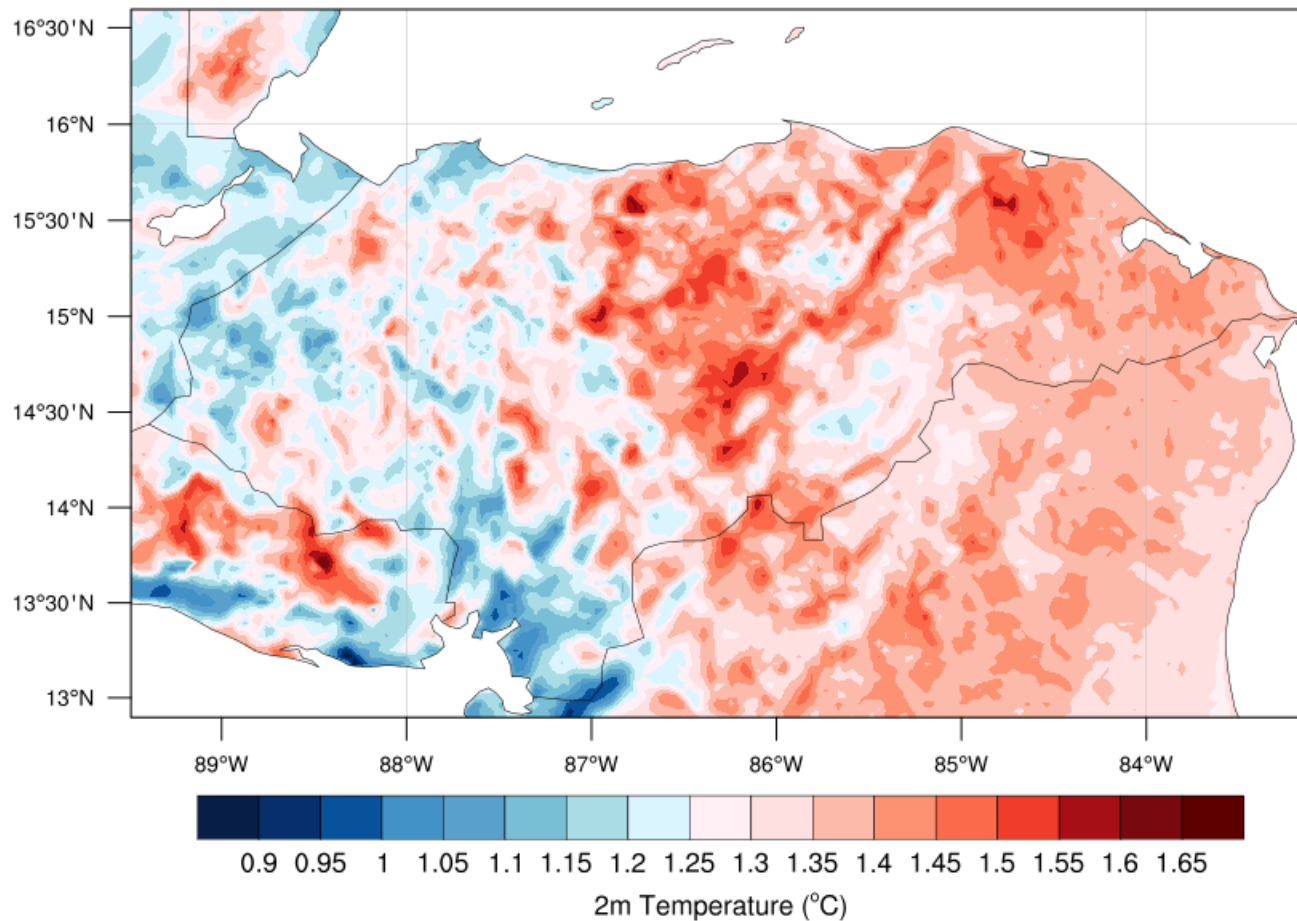
JunJulAug Difference 2050s-2000s

Fill: 2m Temperature (°C)

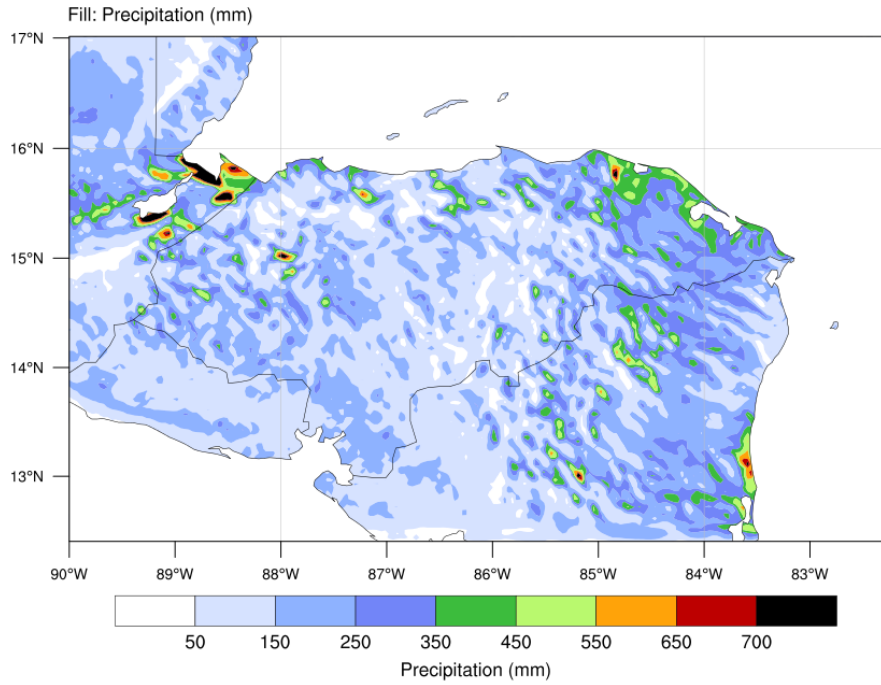


SepOctNov Difference 2050s-2000s

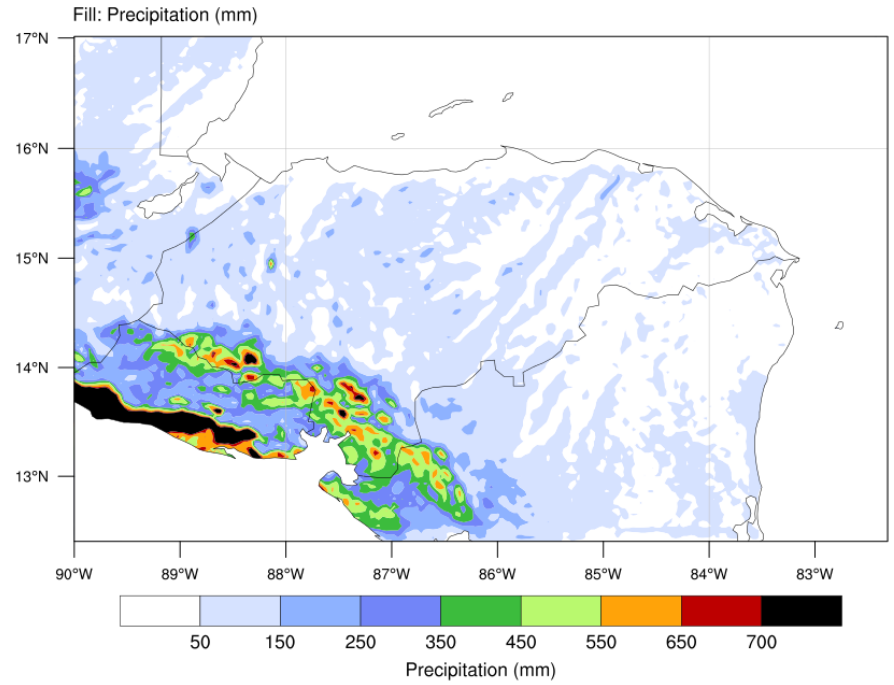
Fill: 2m Temperature (°C)



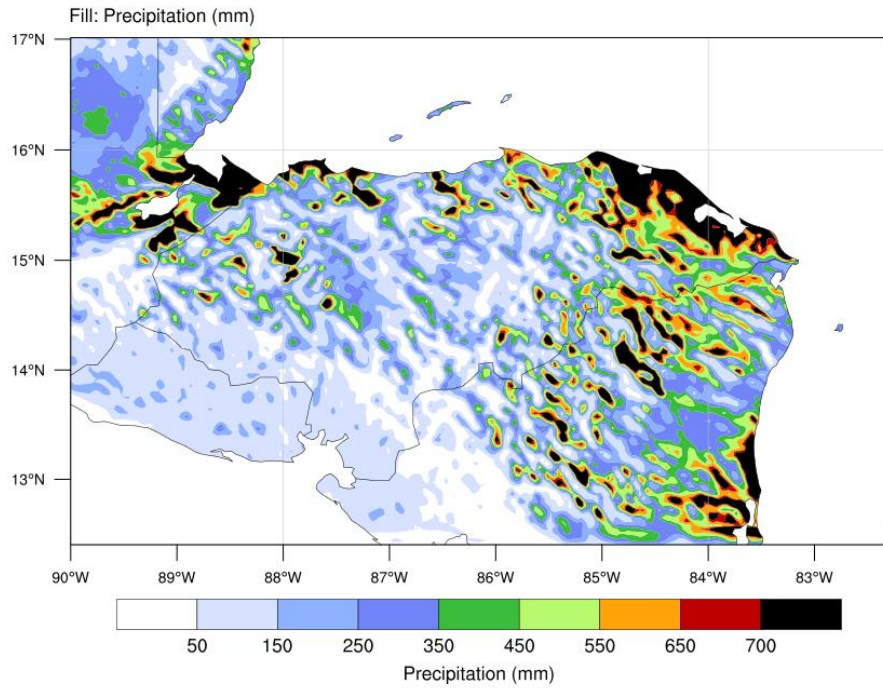
June 2006-2010



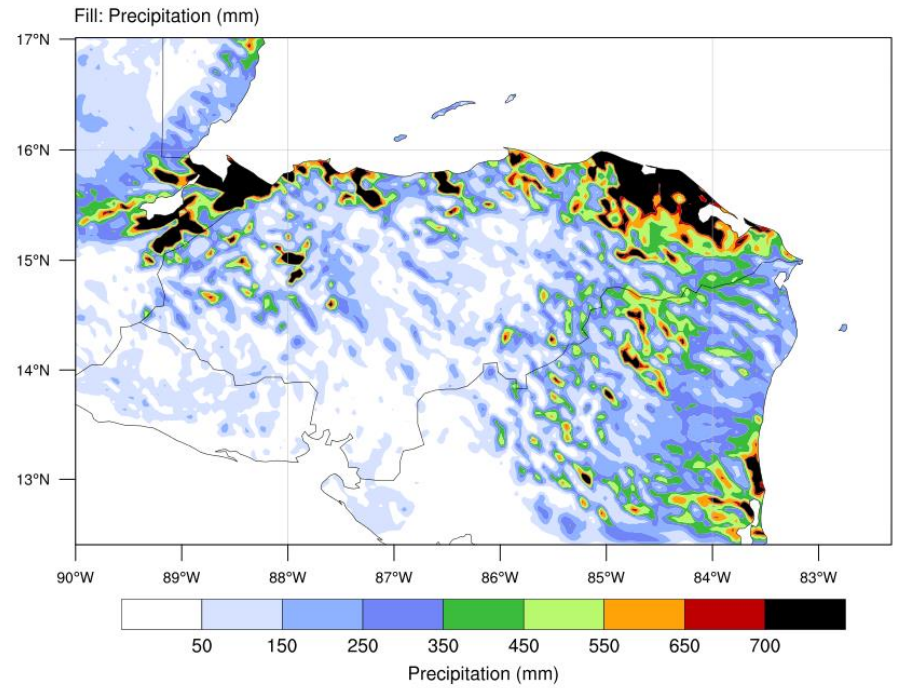
June 2056



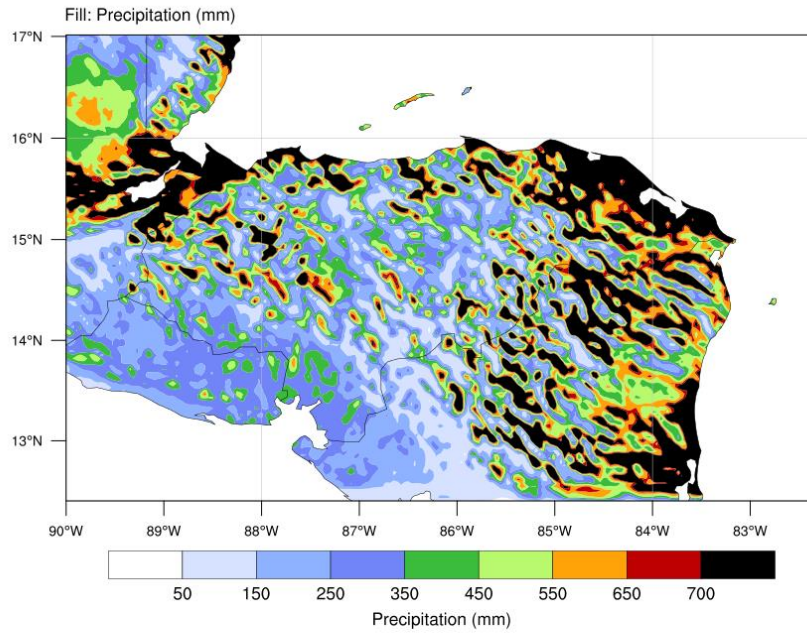
July 2006-2010



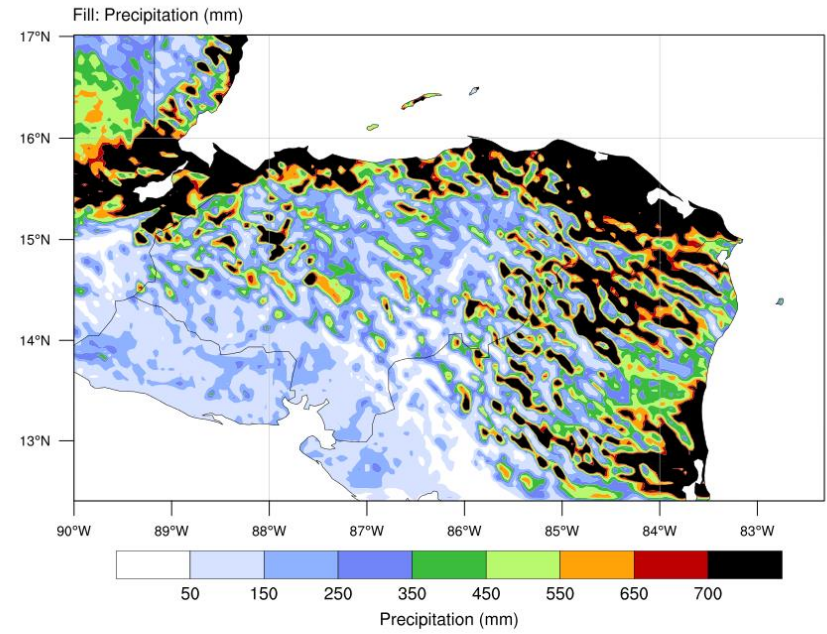
July 2056



August 2006-2010



August 2056

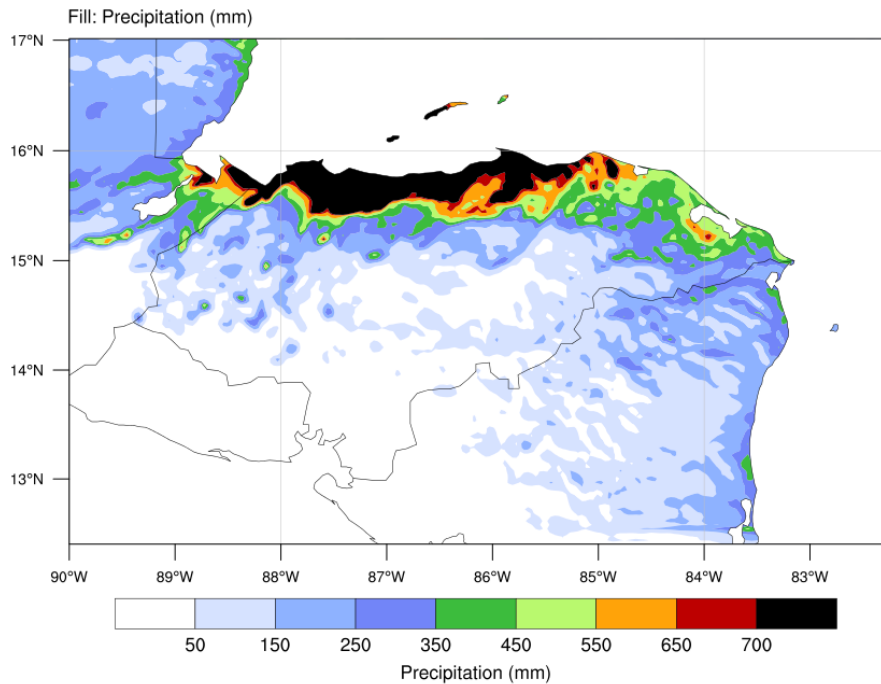


DE CONTINGENCIAS

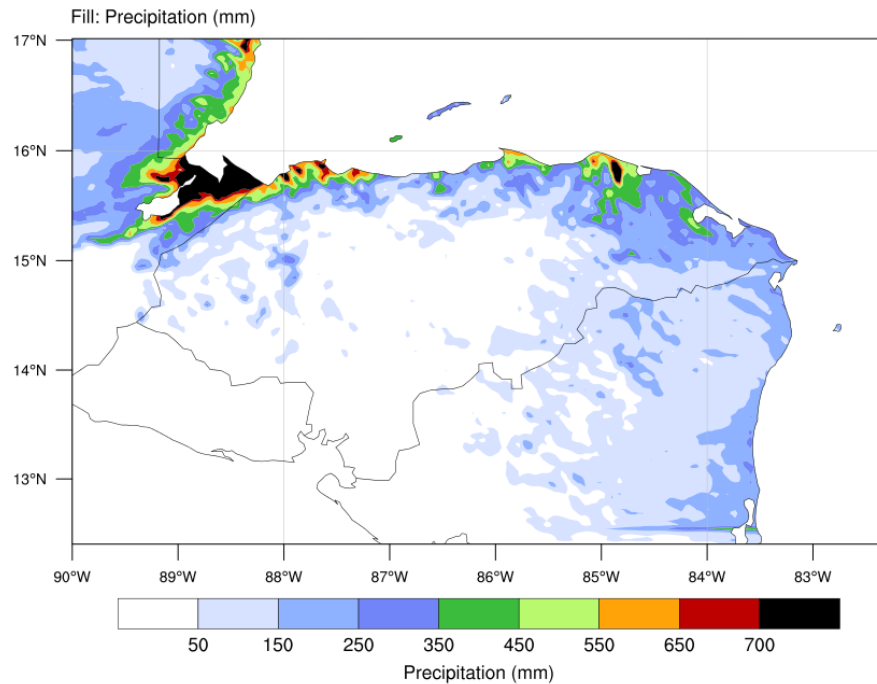


★ ★ ★ ★ ★
COMISIÓN PERMANENTE
DE CONTINGENCIAS

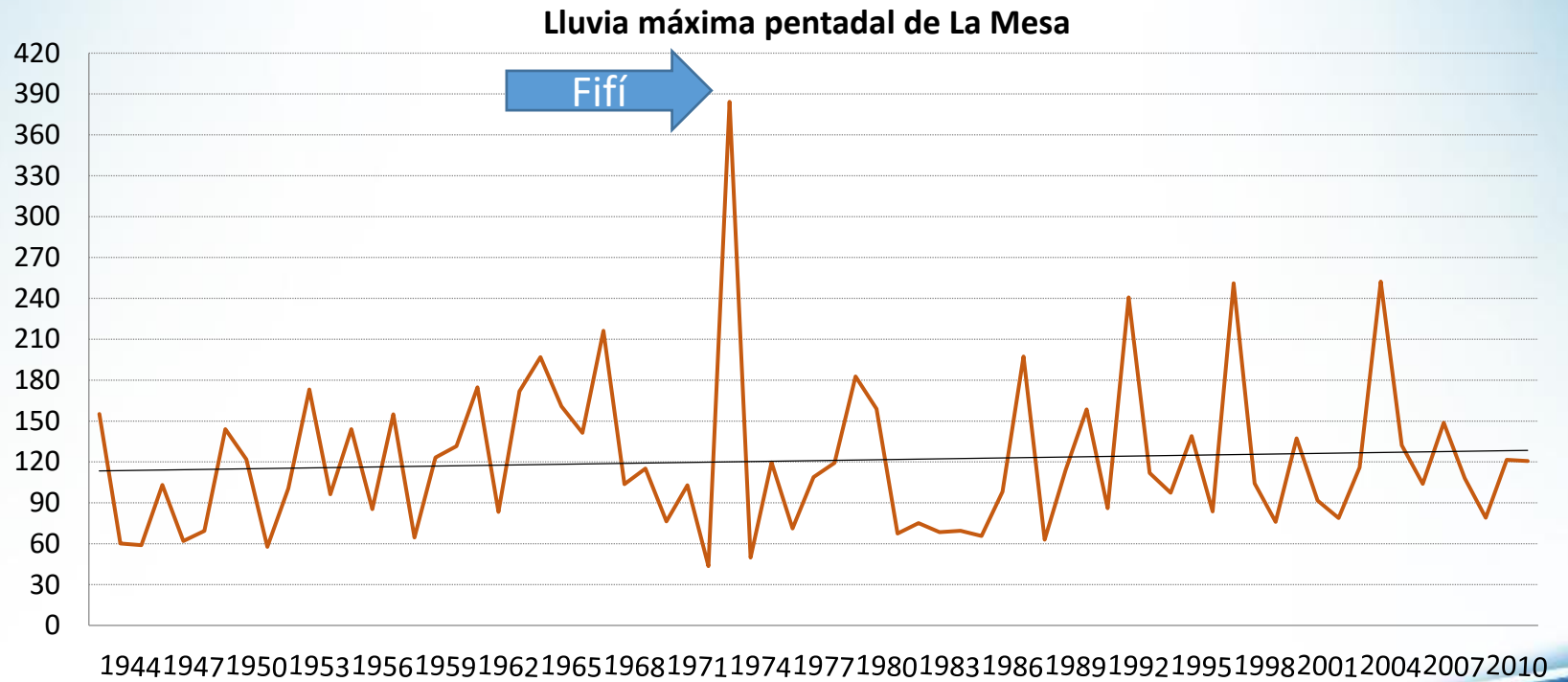
December 2006-2010



December 2056



Tendencias Climáticas del Valle de Sula

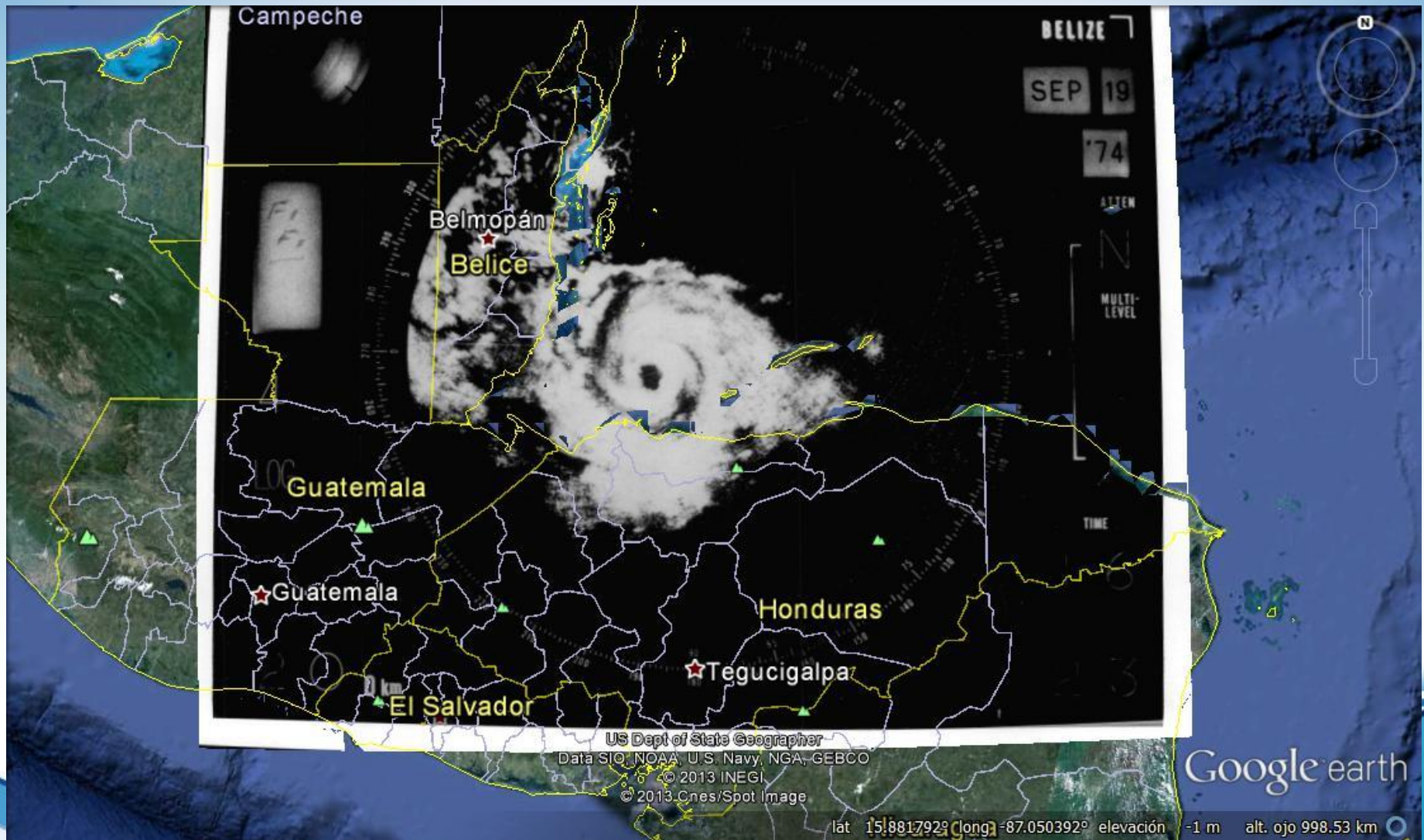


DE CONTINGENCIAS

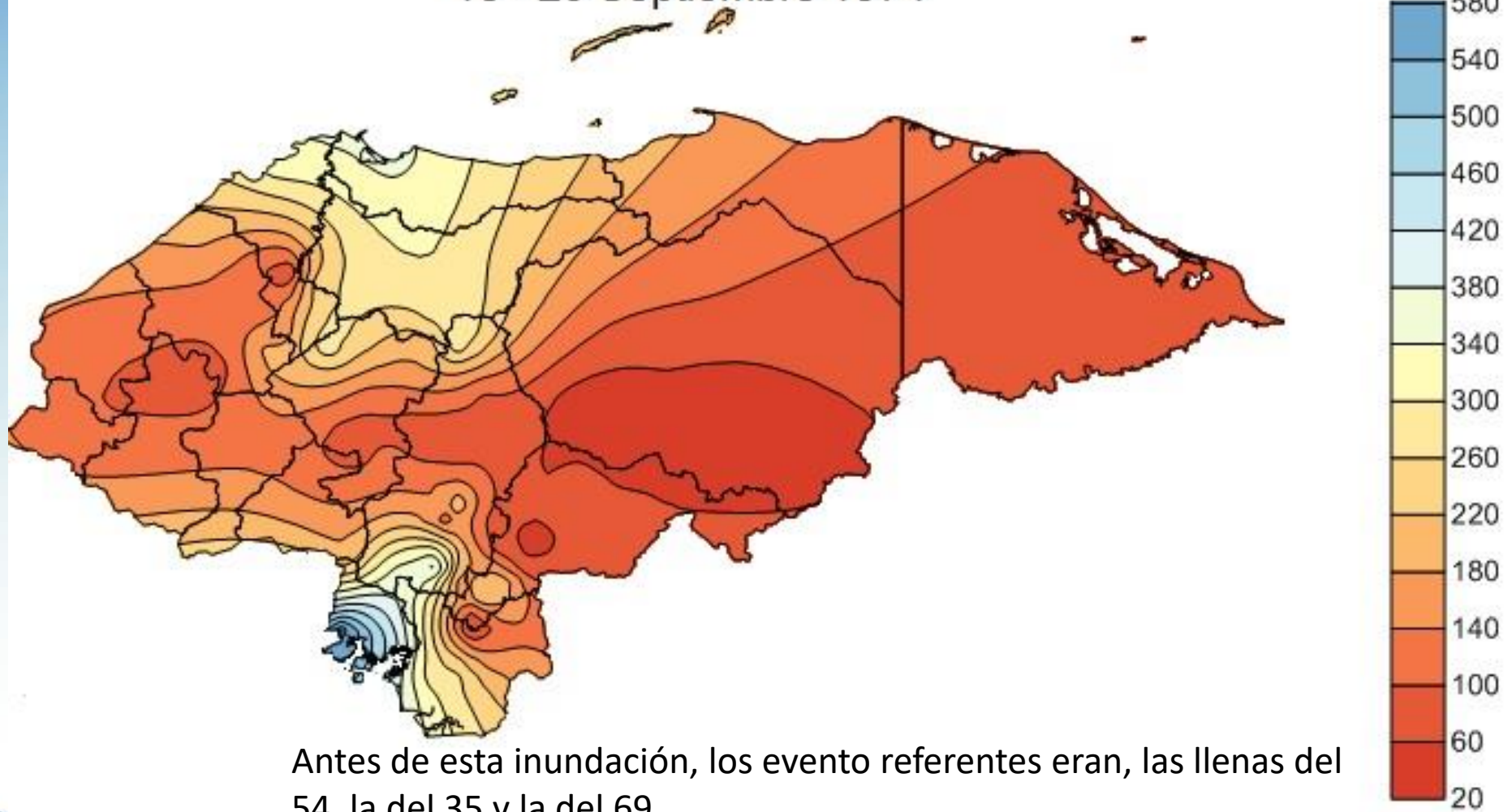


COMISIÓN PERMANENTE DE CONTINGENCIAS

Huracán Fifi, 19 Sept 1974

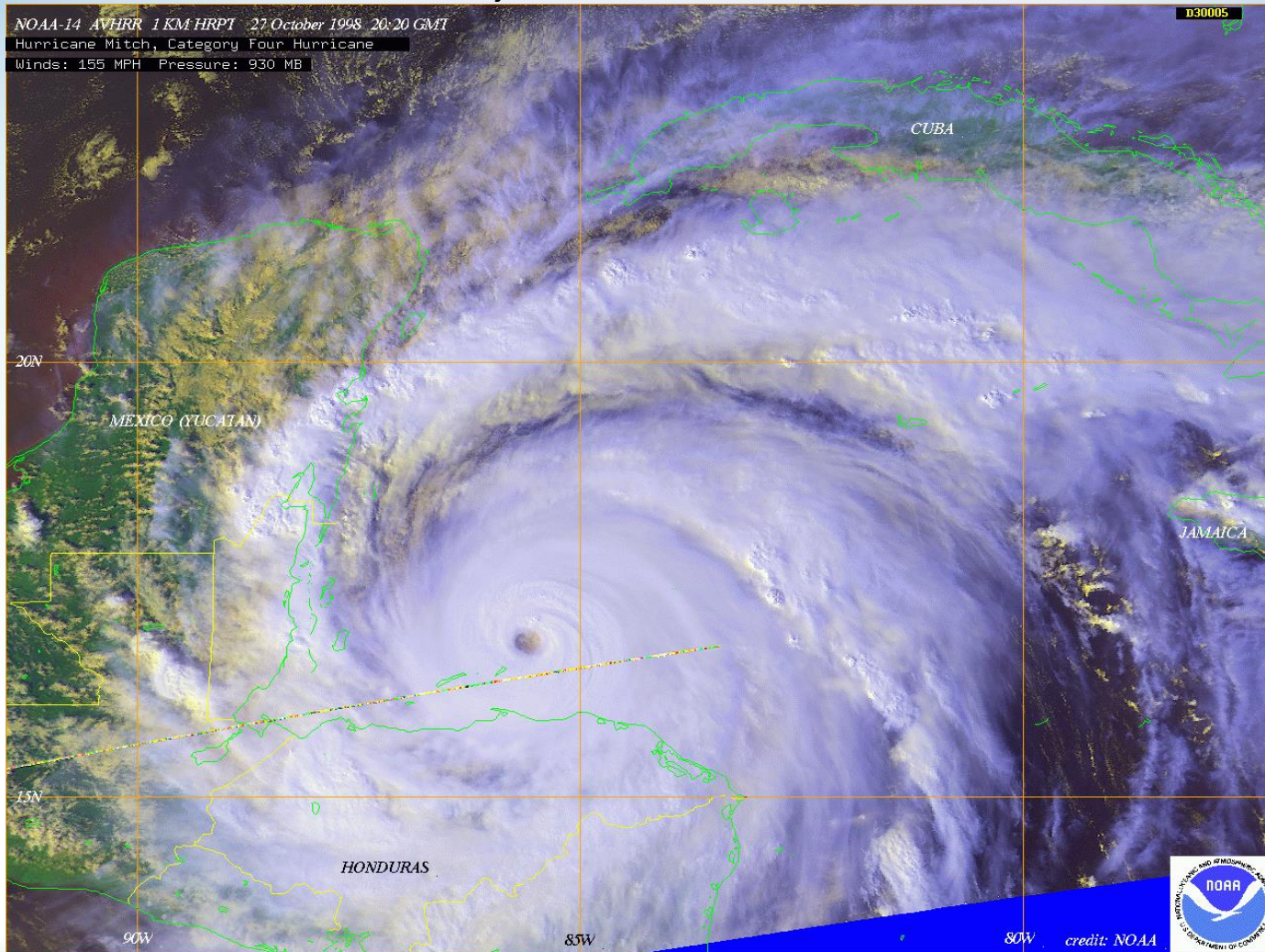


Lluvias generadas por el huracán Fifi 15 - 20 Septiembre 1974

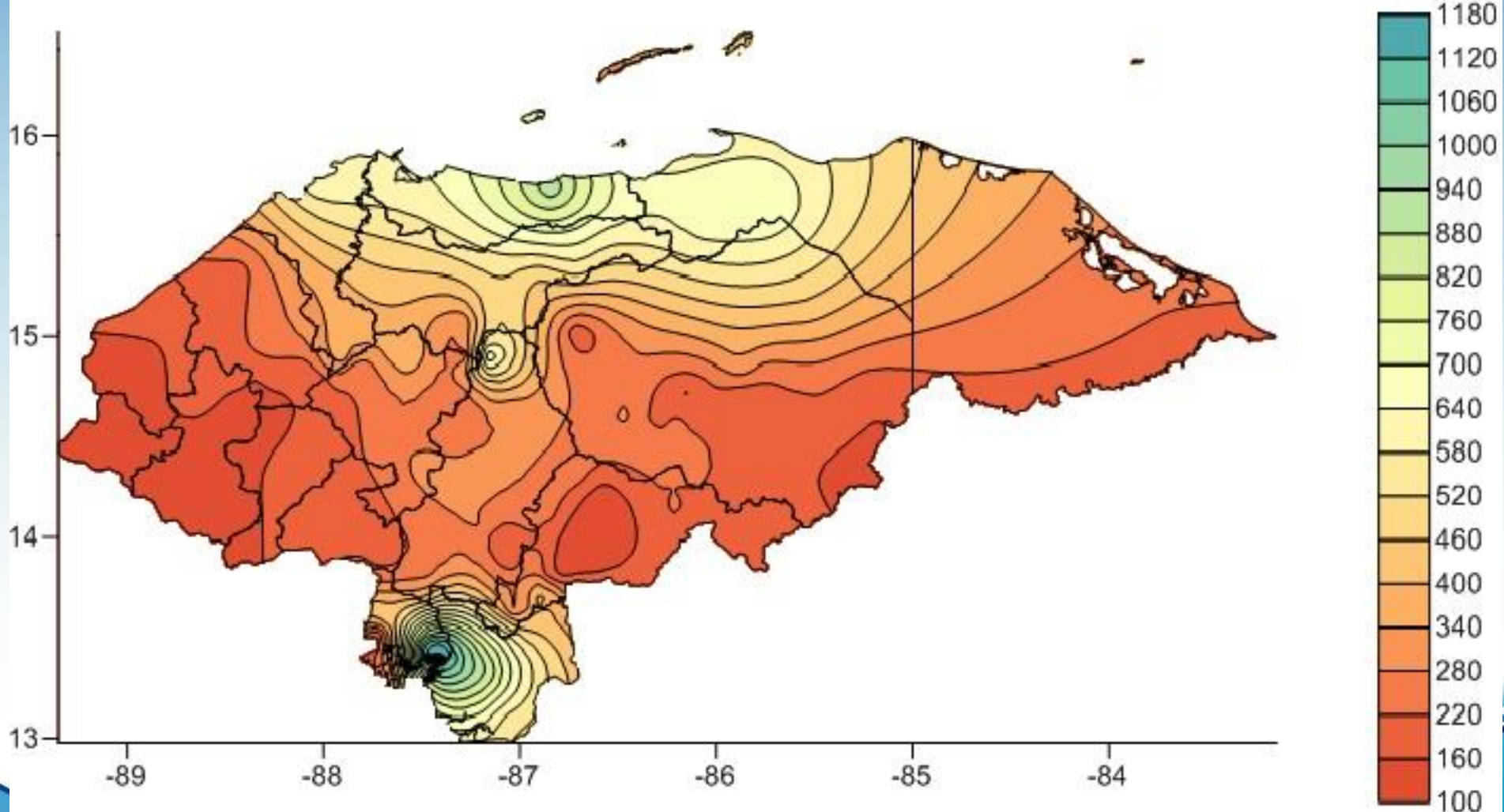


Antes de esta inundación, los eventos referentes eran, las lllenas del 54, la del 35 y la del 69

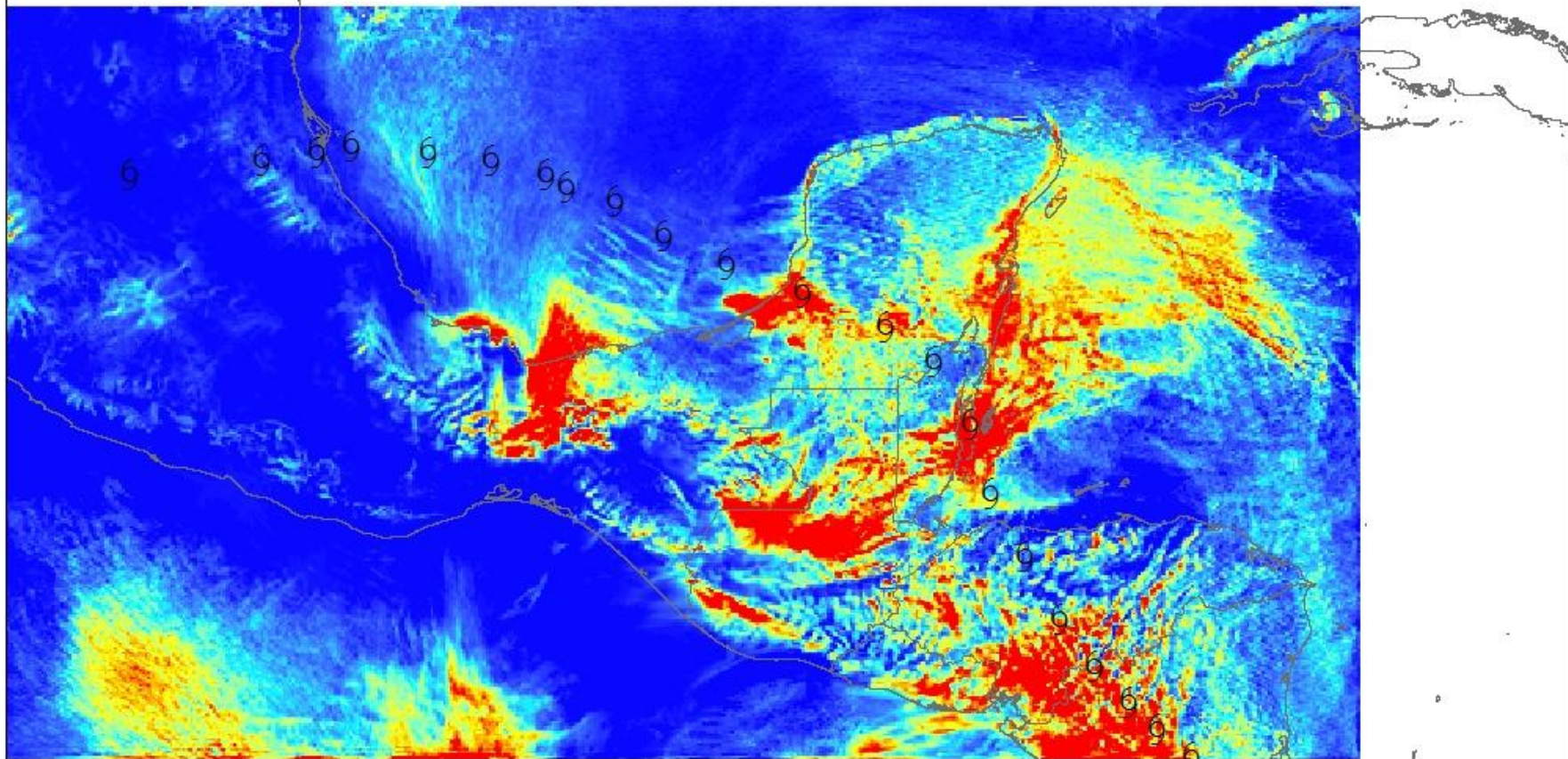
Huracan Mitch, 27 de octubre 1998



Lluvias generadas por el huracán Mitch 26 al 31 de Octubre 1998



Gert Track 1993 and precipitation stimated with NNR_fix



PRCP_GERT1993_3

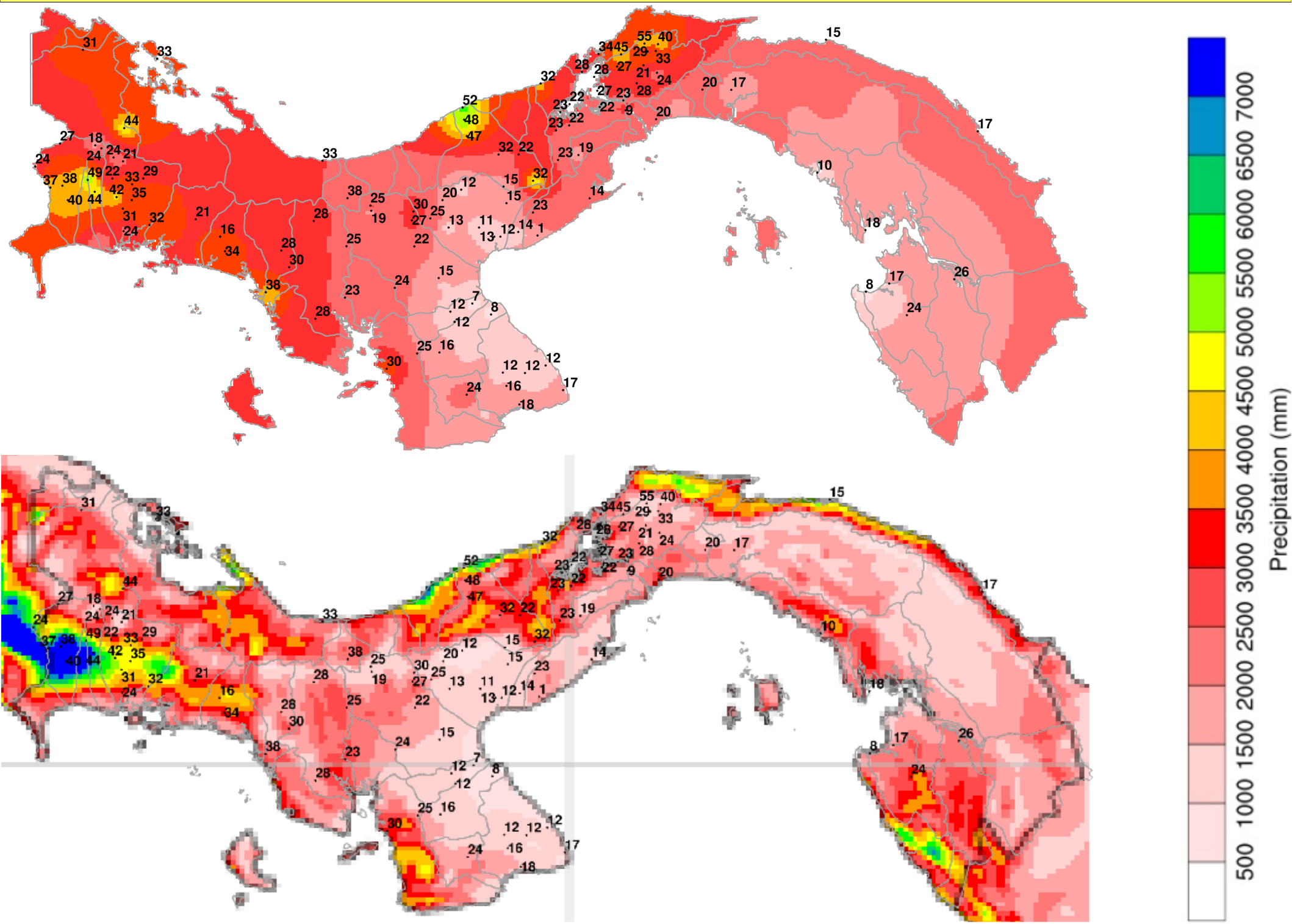
Value



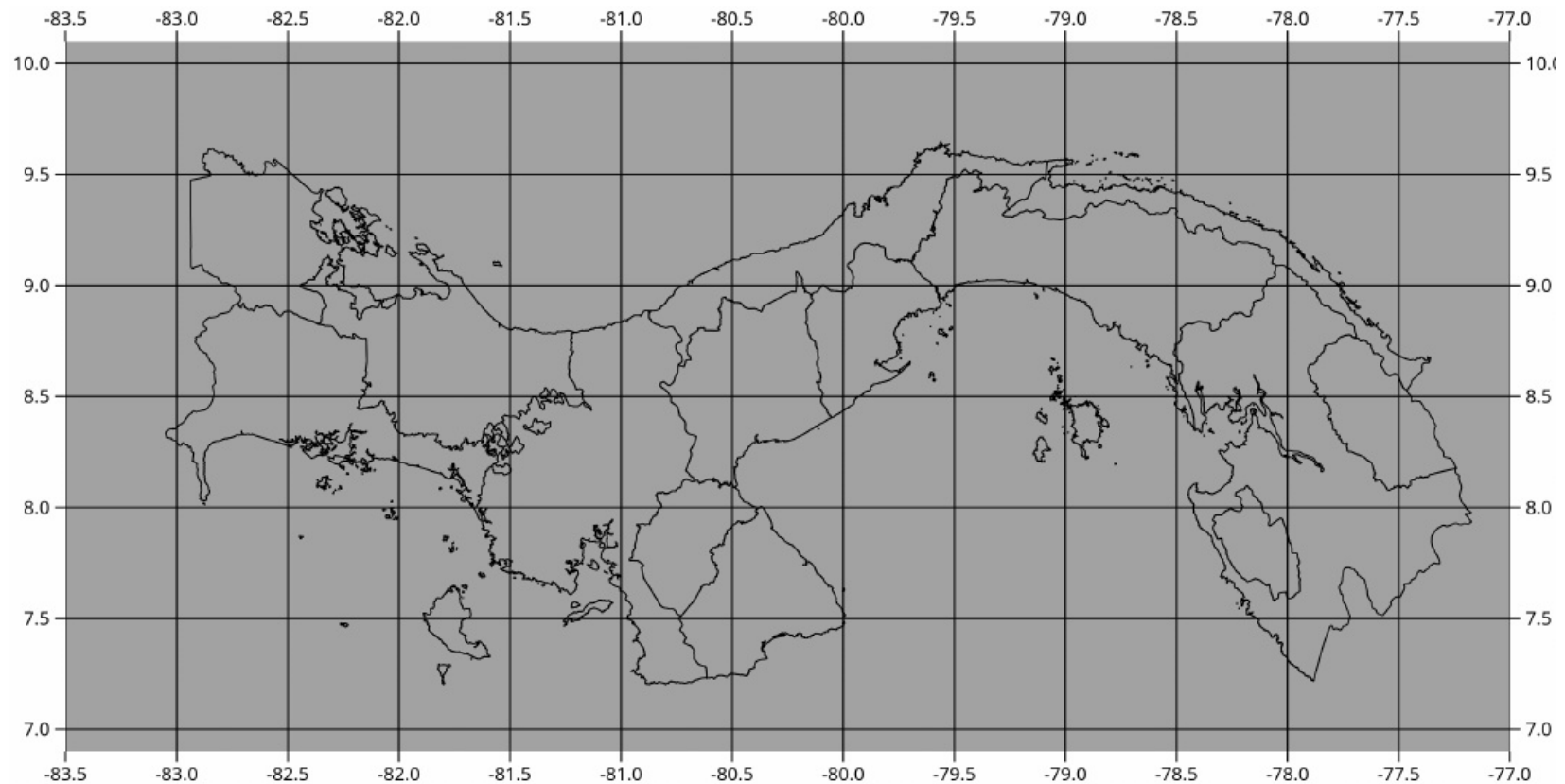
Recomendations

- Help to develop more programation and GIS skills
- To stablish schedule to achieve goal in short term by groups.
- UNL should make available runs for RCP2.6 scenarios

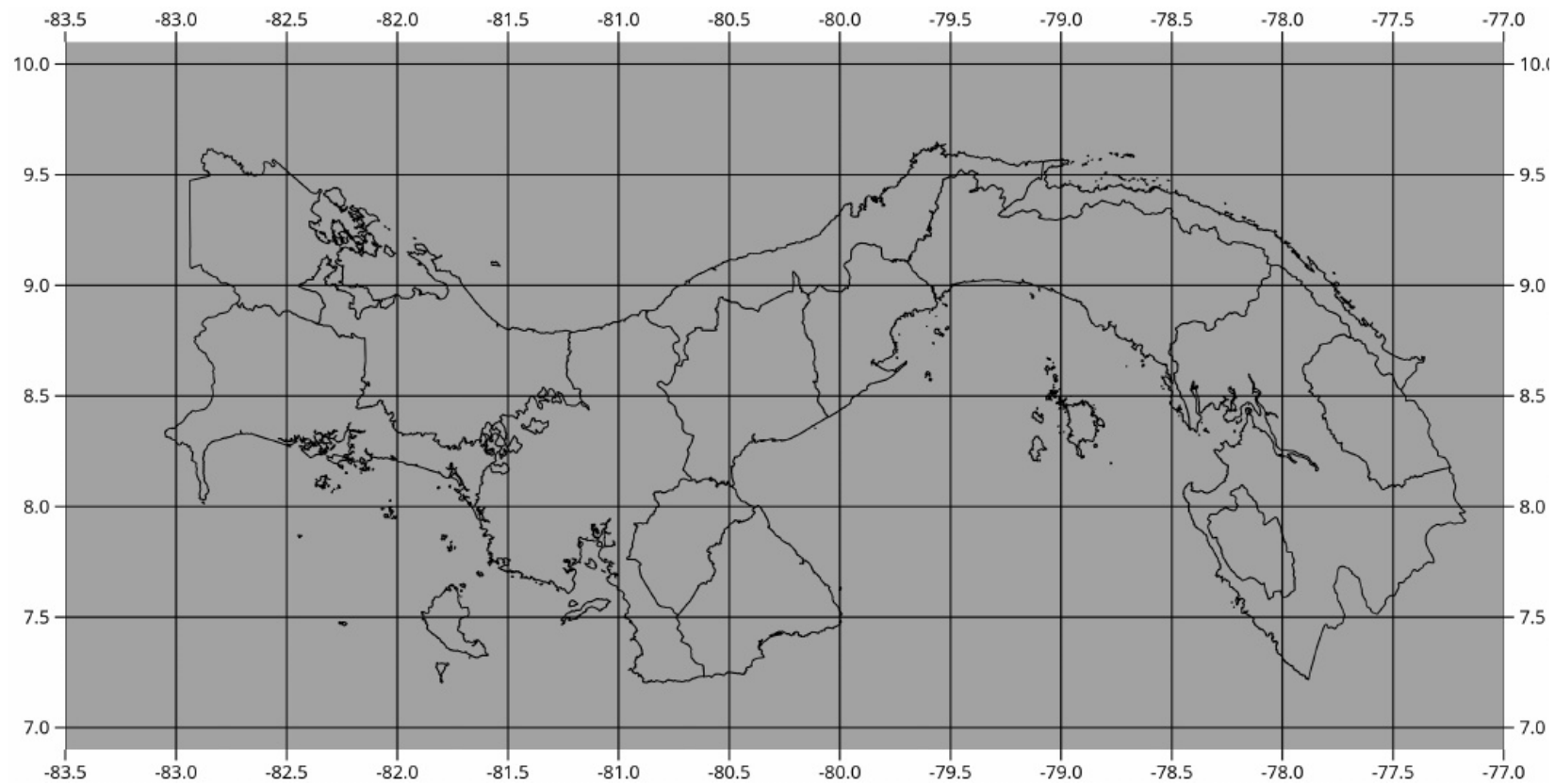
Datos de las estaciones (puntos) vs Datos del NCAR (raster) 1991-1993



Name	cpt:X	cpt:Y	2006-01	2006-02	2006-03	2006-04	2006-05	2006-06	2006-07	2006-08	2006-09	2006-10	2006-11	2006-12
Estaciones														
1-cap-Boc			587	172	334	165	166	325	366	357	237	278	195	332
2-cap-Coc			37	11	25	66	154	249	305	354	265	258	376	65
3-cap-Col			146	73	151	234	396	219	446	368	256	290	619	145
4-cap-Chi			137	27	43	163	416	440	426	308	358	601	394	167
5-cap-Dar			33	4	26	31	172	137	216	165	82	120	303	113
6-cap-Her			14	1	1	40	127	154	228	182	144	184	187	29
7-cap-Los			20	10	0	20	156	199	222	197	159	212	198	45
8-cap-Pan			42	32	91	151	263	307	386	328	242	386	501	63
9-cap-Ver			50	14	11	131	269	339	329	359	331	414	431	32
Modelo H-E														
			06-01mea	06-02mea	06-03mea	06-04mea	06-05stde	06-06stde	06-07stde	06-08stde	06-09stde	06-10stde	06-11stde	06-12stdev
Bocas del Toro			107	31	52	250	51	60	56	102	56	42	61	17
Coclé			9	43	36	136	72	104	74	82	73	99	83	31
Colón			15	10	3	124	66	39	13	75	60	43	143	51
Chiriquí			199	12	37	217	126	80	16	127	105	124	176	105
Darién			190	86	95	296	99	68	157	113	89	68	109	224
Herrera			102	47	13	257	108	107	105	49	80	81	74	160
Los Santos			19	75	2	103	47	66	25	62	45	39	58	76
Panamá			41	16	53	151	119	79	49	144	66	117	200	110
Veraguas			161	74	25	269	78	92	121	93	115	69	96	100

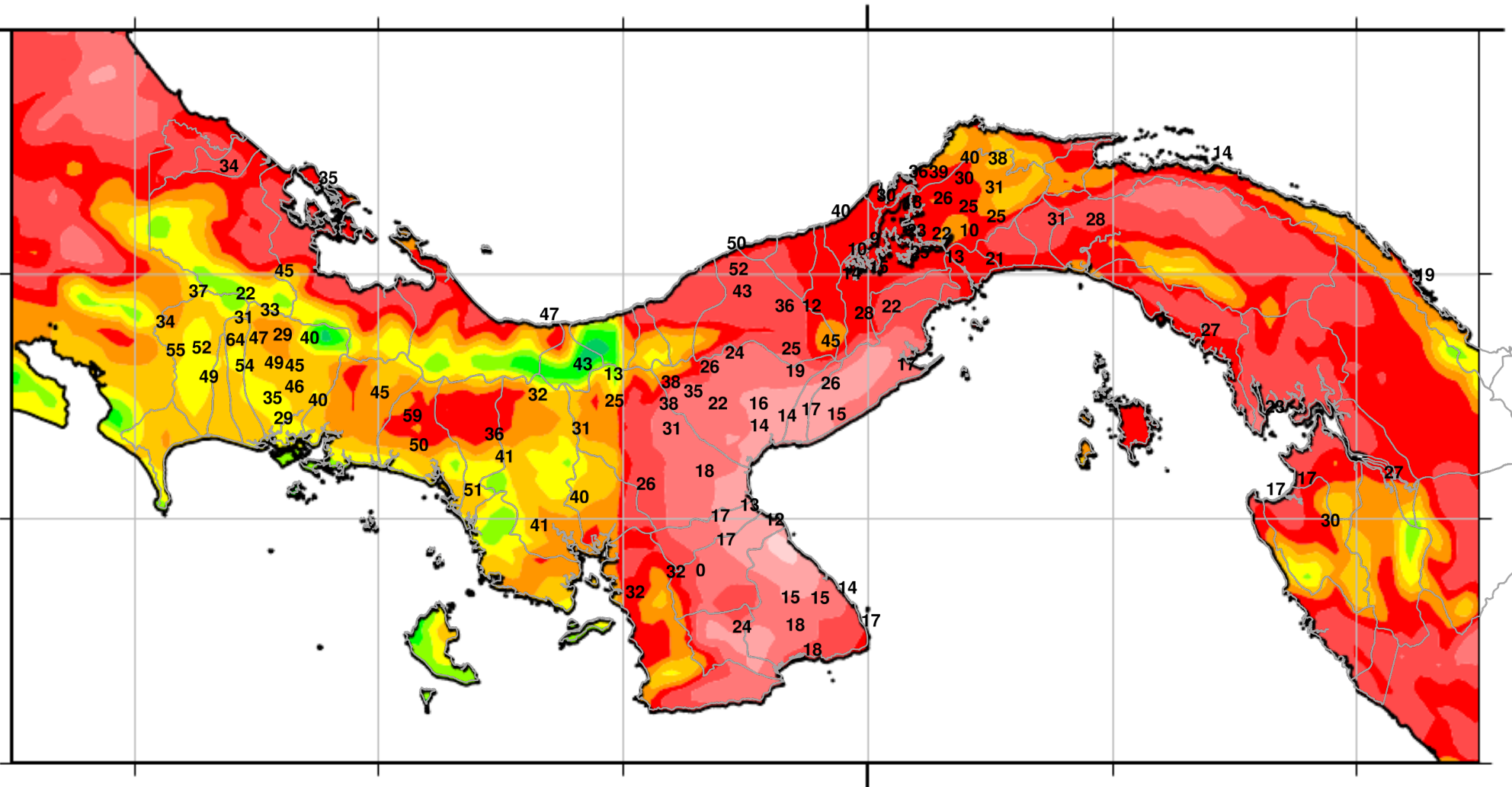


	0	84.0	83.5	83.0	82.5	82.0	81.5	81.0	80.5	80.0	79.5	79.0	78.5	78.0	77.5	77.0
10.0	1	1	1	1	1	1	1	1	1	1	1	1	1	1	1	1
9.5	1	1	1	1	1	1	1	1	0.10	0.55	1	1	1	1	1	
9.0	1	1	0.18	0.18	1	1	1	0.10	0.55	0.99	0.99	0.99	1	1	1	
8.5	1	1	1.46	0.82	1	3.24	1.19	0.61	0.99	1	0.99	3.41	5.83	1	1	
8.0	1	1	1.46	1.46	1.46	3.24	3.55	0.23	1	1	5.83	5.83	5.83	1	1	
7.5	1	1	1	1	3.24	3.24	3.79	0.96	1	1	5.83	5.83	5.83	1	1	
7.0	1	1	1	1	1	1	2.10	0.96	1	1	1	5.83	1	1	1	



Goes Data

10N



500

1500

2500

3500

4500

5500

6500

H-E Adjusted